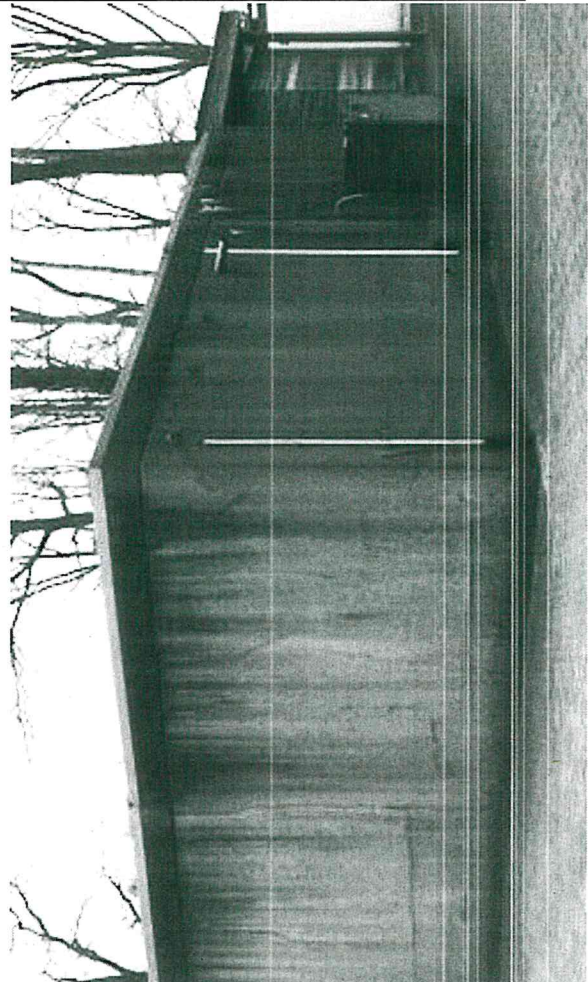
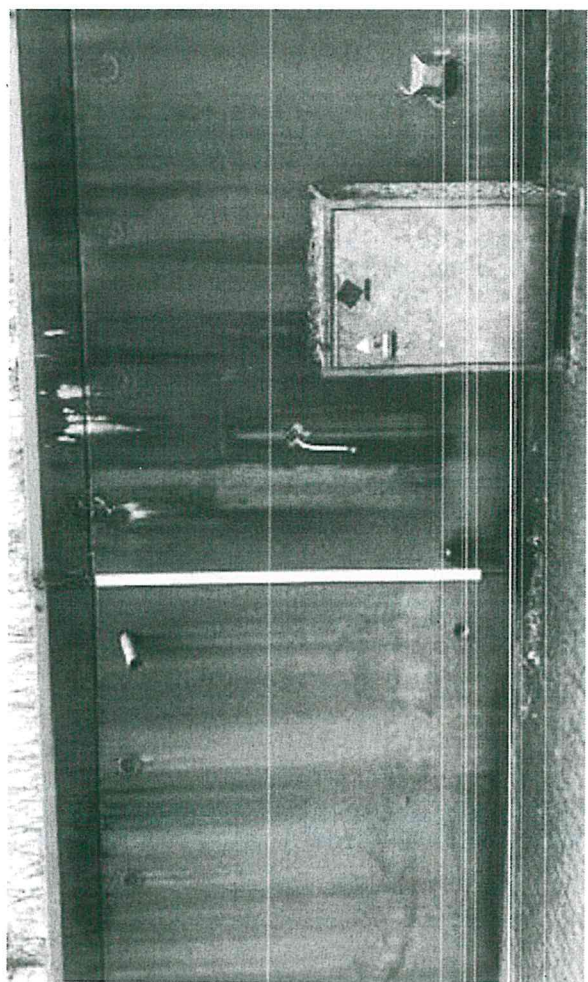
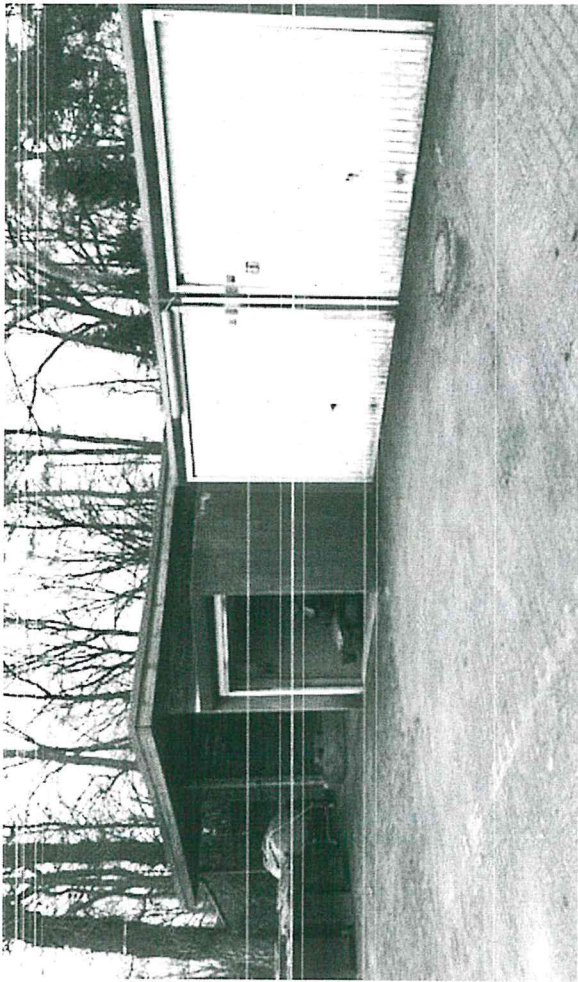


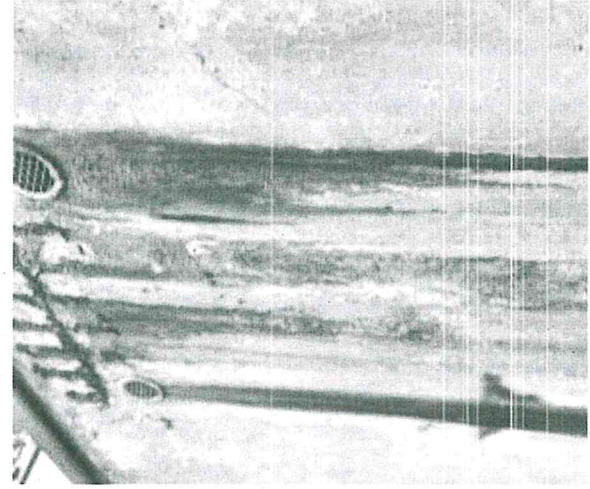
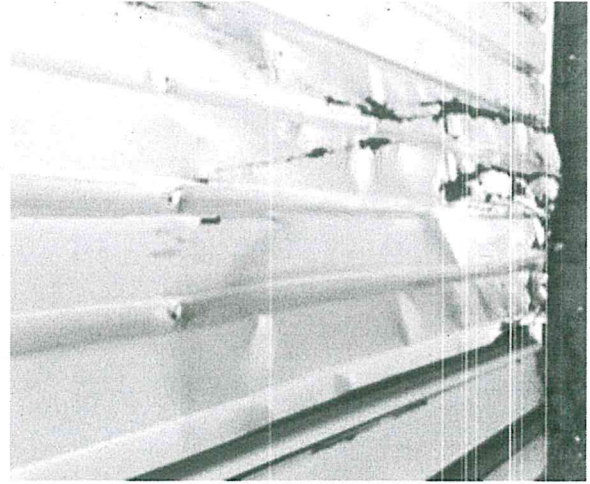
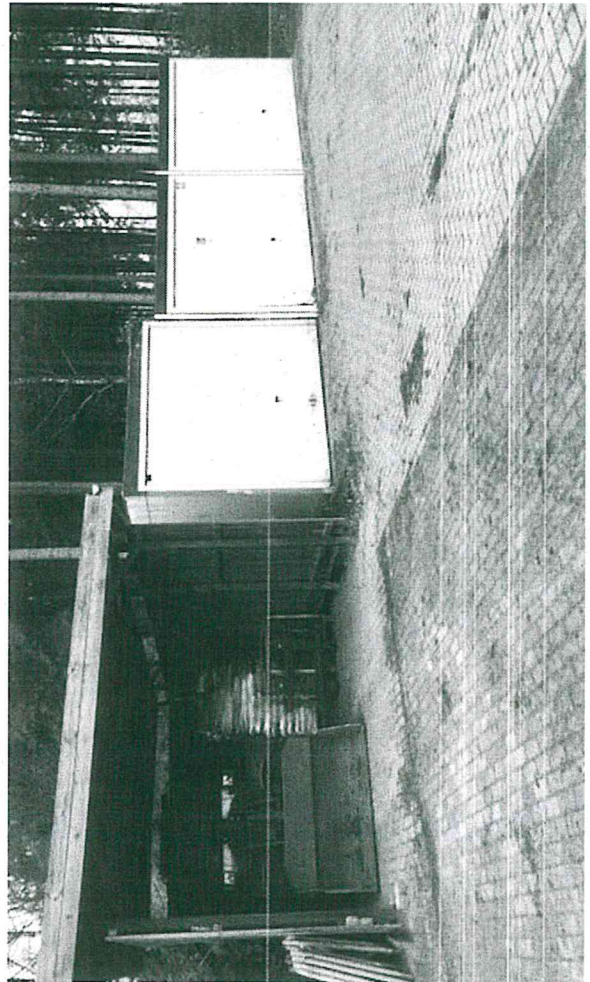
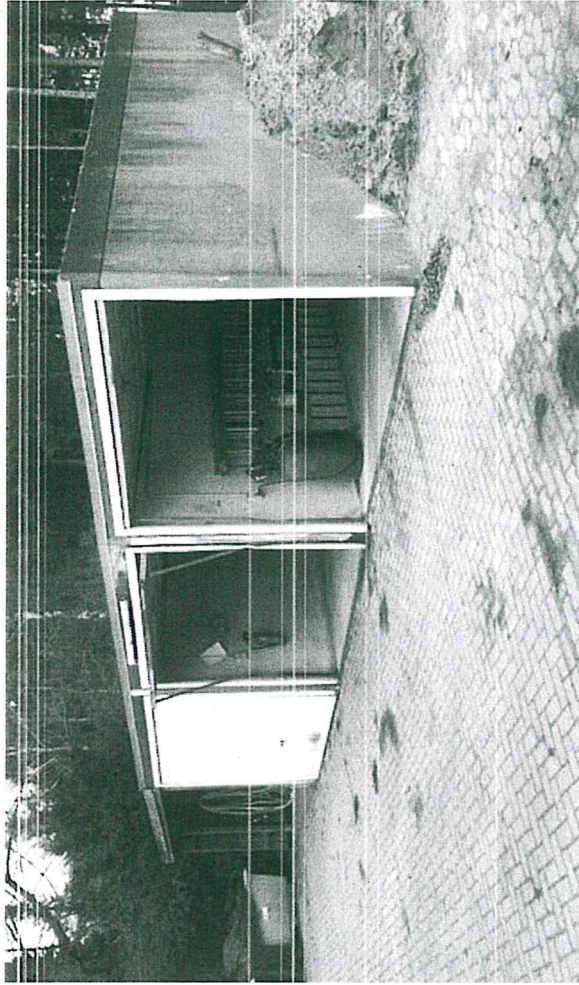
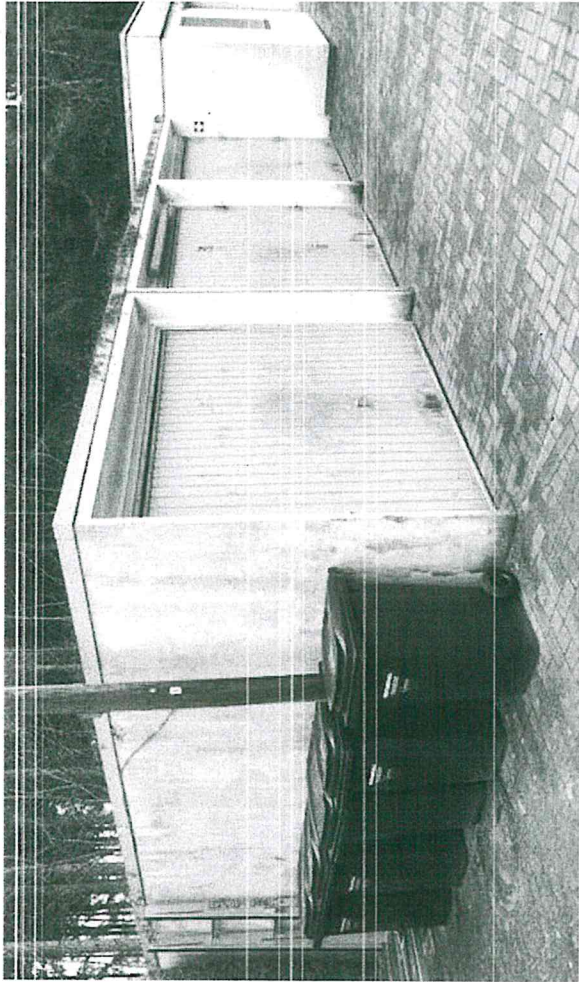
Anlage 2 zu Vorlage M 19 / 0158

Betriebshof Friedhof Friedrichsgabe:

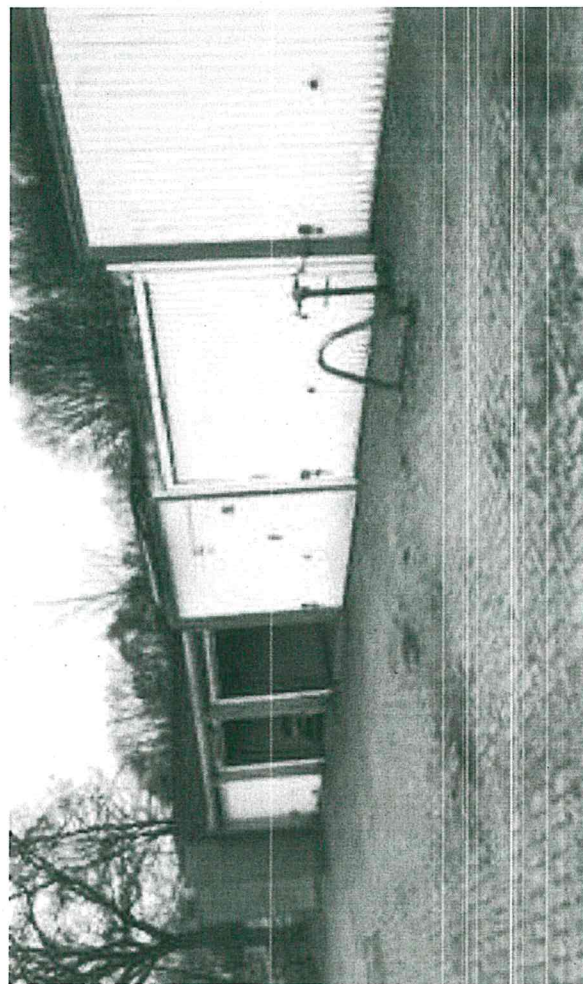
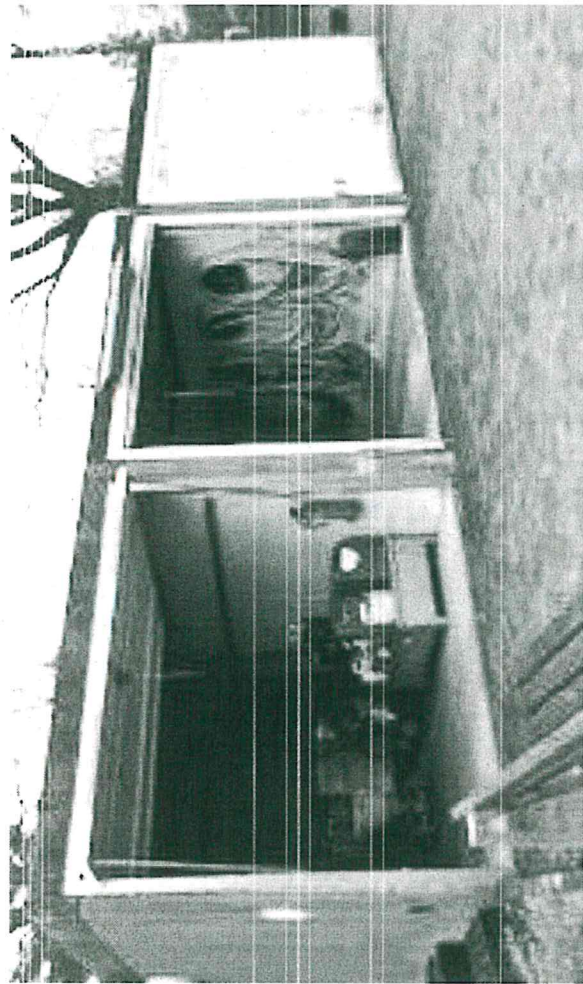
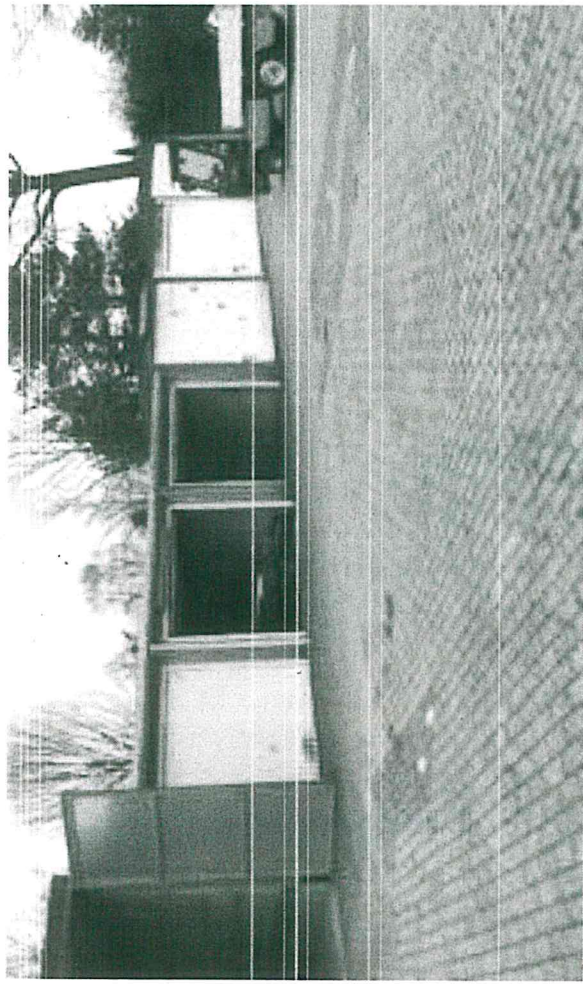


Anlage 8 zu Niederschrift 20.03.19, TOP 14.6

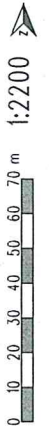
Betriebshof Friedhof Glashütte:



Betriebshof Friedhof Harksheide:

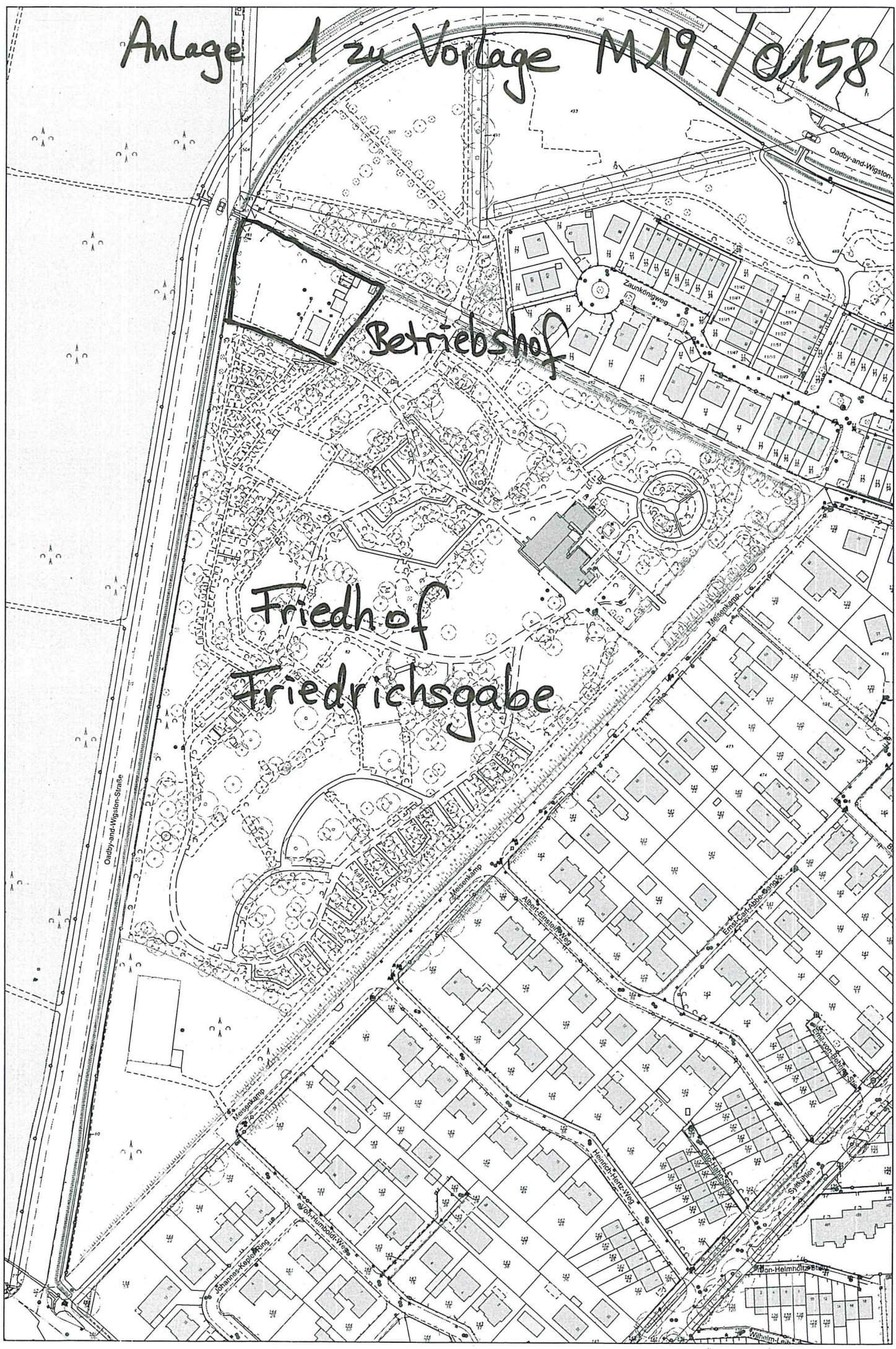


Anlage 1 zu Vorlage M19 / 0158

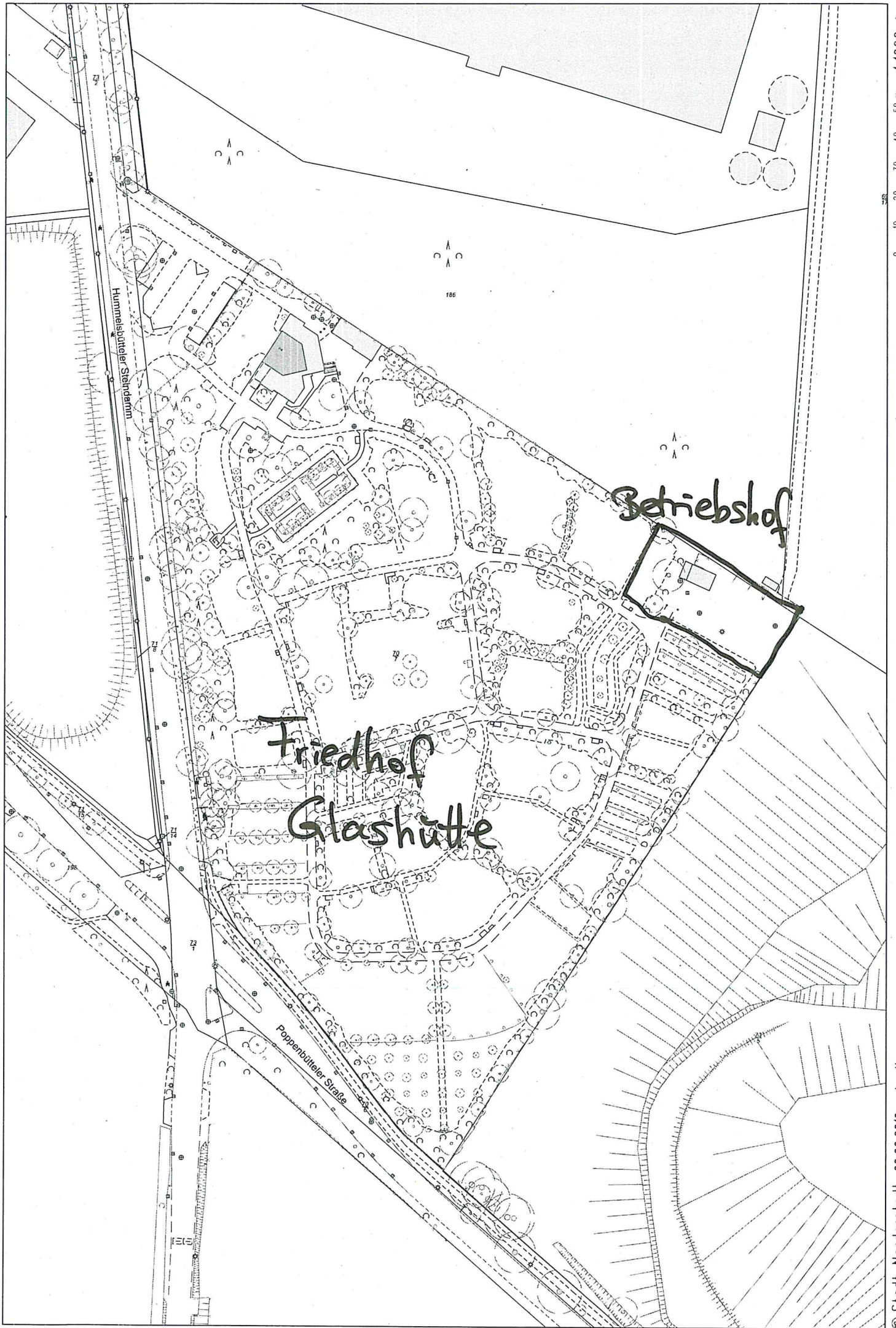


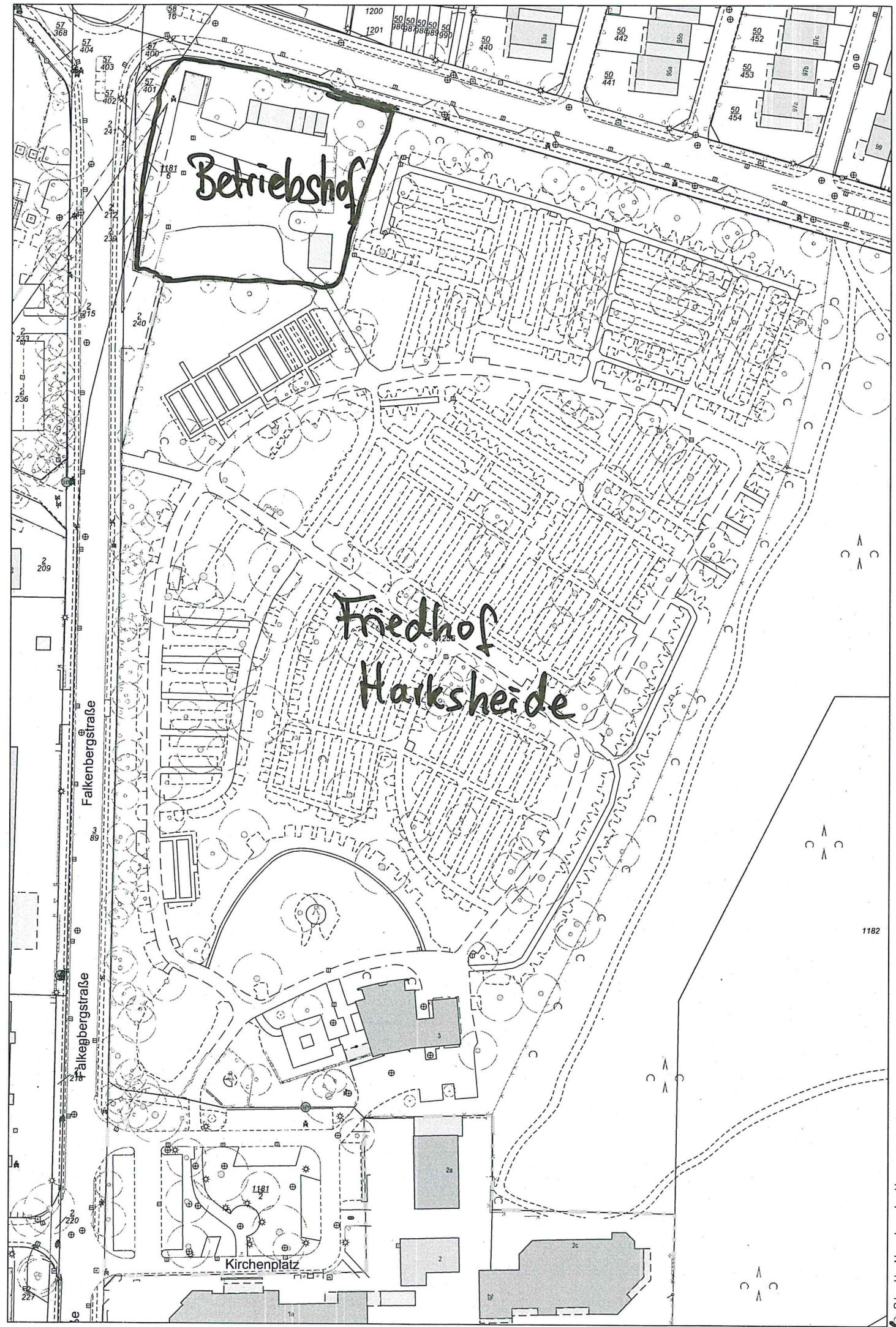
Betriebshof

Friedhof
Friedrichsgabe



Anlage 2 zu Niederschrift 20.03.15 TOP 14.6



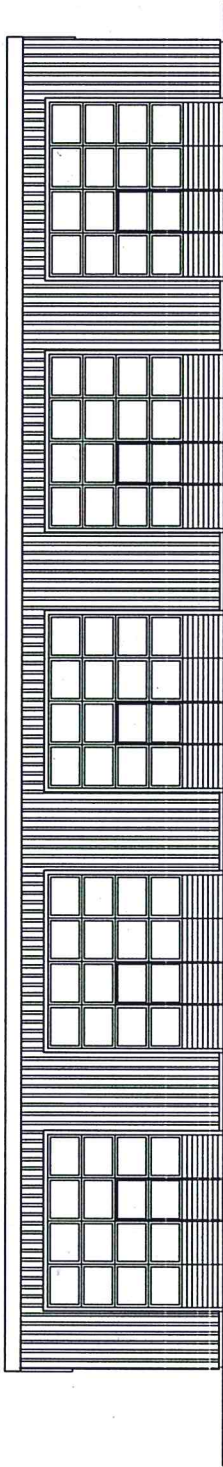


1:1200
0 10 20 30 m

Subjekt zu Projekt 0007-2019-146

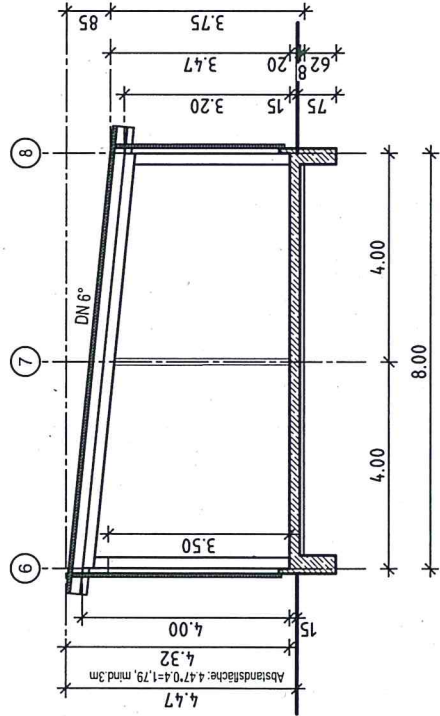
Anlage 3 zu Vorlage

M 19 / 0158



Ansicht von West

25.575



Querschnitt

ARCHITEKTURBÜRO OPITZ

Dipl.Lng. Architektin Kitty Opitz
Schulstraße 9 22880 Wedel
Fon 04103 - 84 221 Fax 04103 - 91 9265

Planer

Stadt Norderstedt - Die Oberbürgermeisterin -

Betriebsamt

Rathausallee 50, 22846 Norderstedt

Bauherr

Waldfriedhof Friedrichsgabe - Neubau Remise -
Meisenkamp 1
22846 Norderstedt

Bauvorhaben

Datum 17.01.2019

Maßstab 1:100

Plan-Nr. 02

Ansicht, Querschnitt

Planhohl

Anlage 10 zu Niederschrift 20.03.19, TOP M.6