



Neubau einer psychiatrischen Tagesklinik
für Erwachsene
Buschweg/Am Knick in 22850 Norderstedt

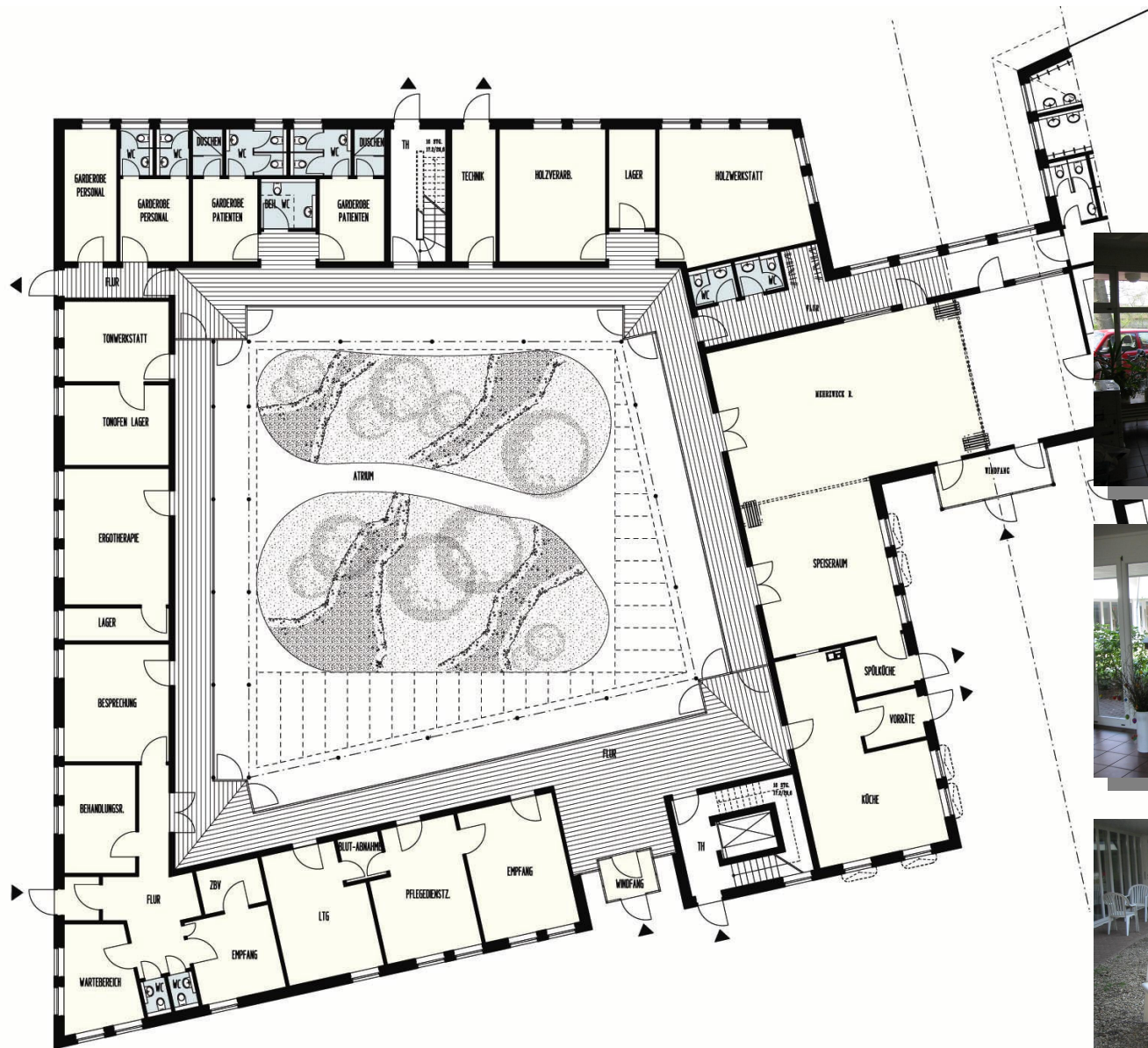
Luftbild



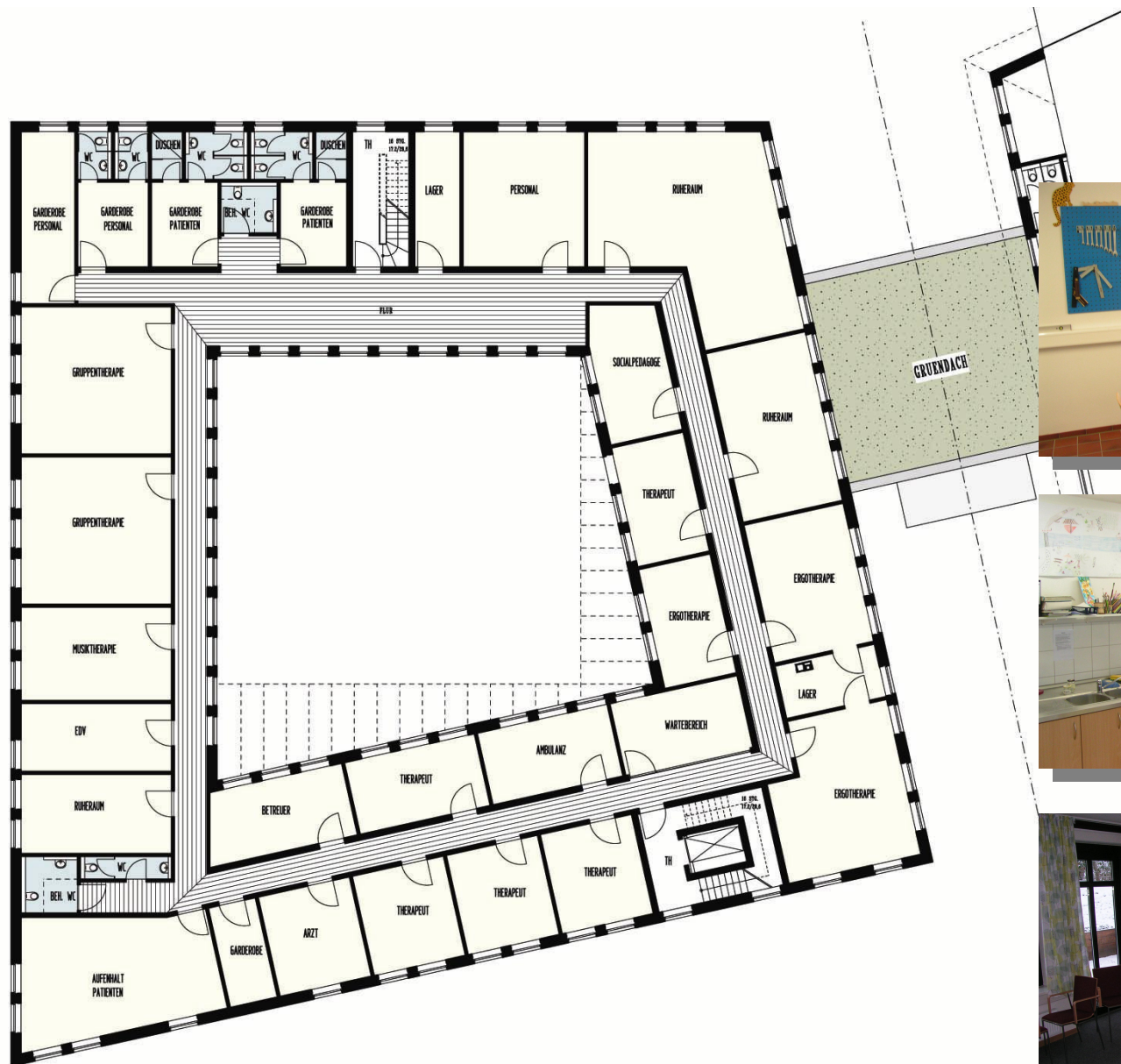
Lageplan



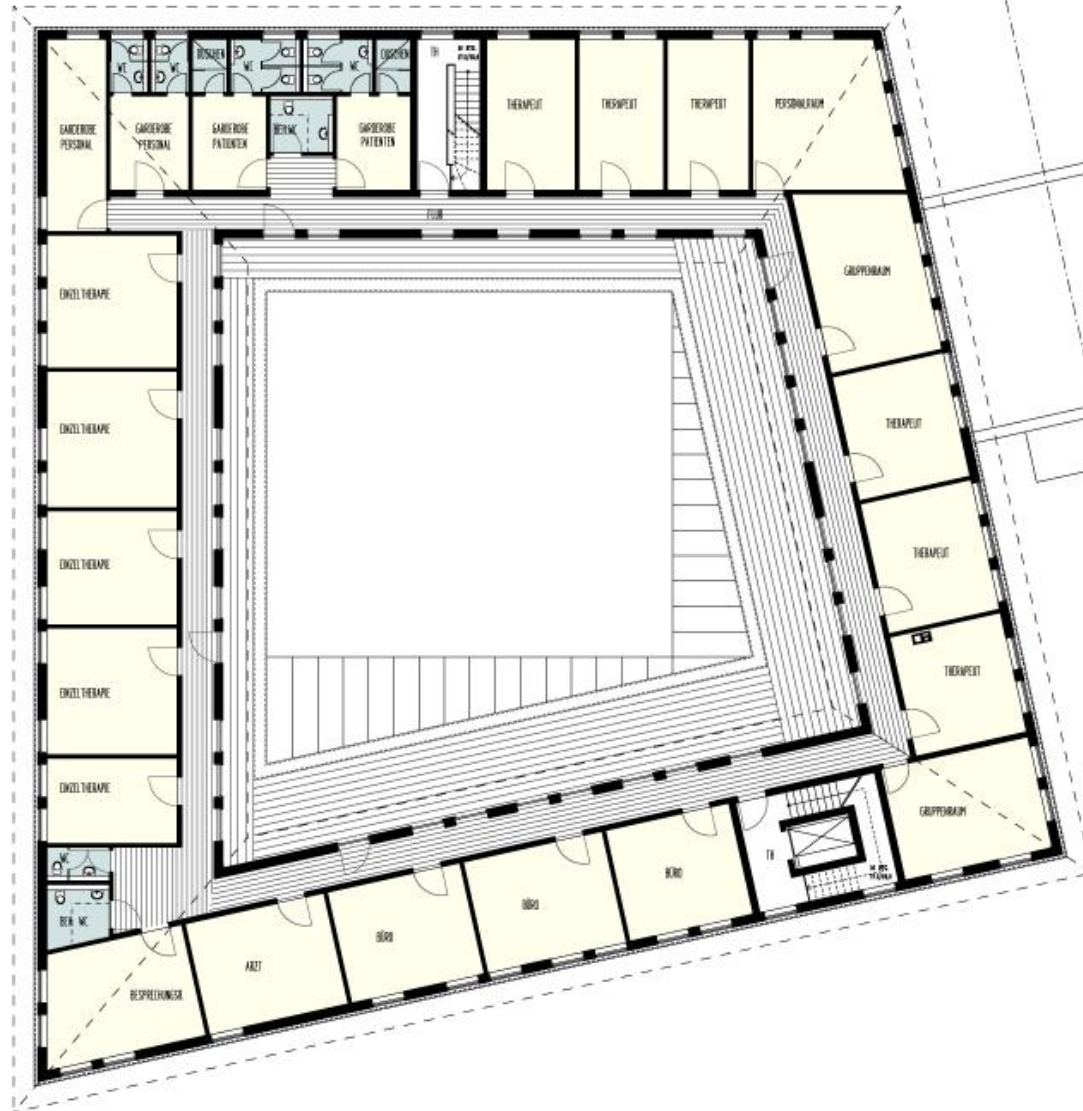
Erdgeschoss



1. Obergeschoss



Staffelgeschoss



West-Ansicht



Süd-Ansicht



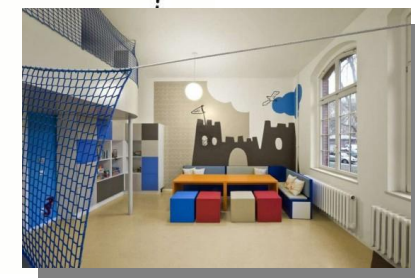
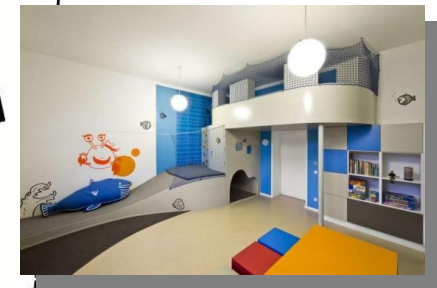
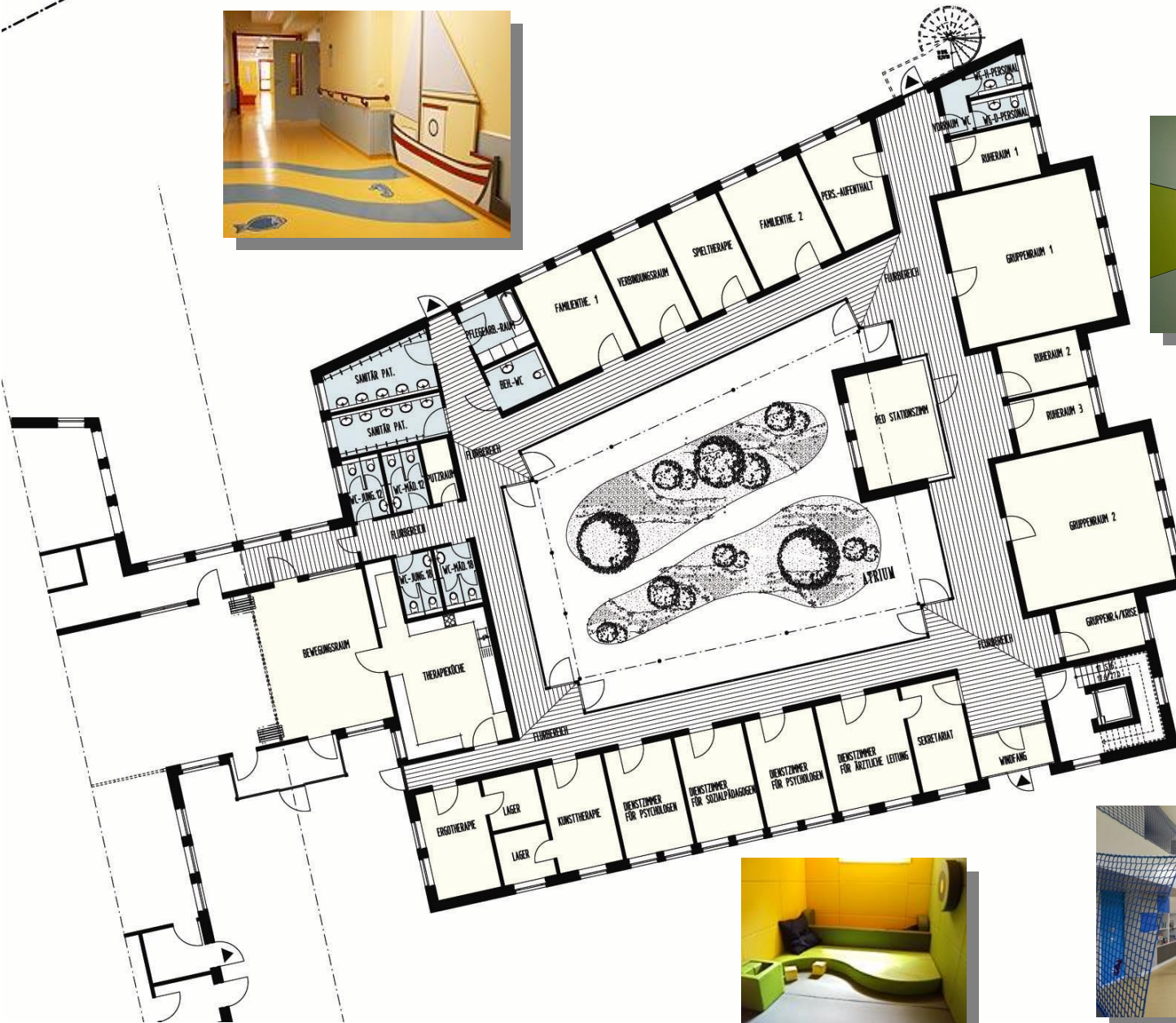
Schnitt



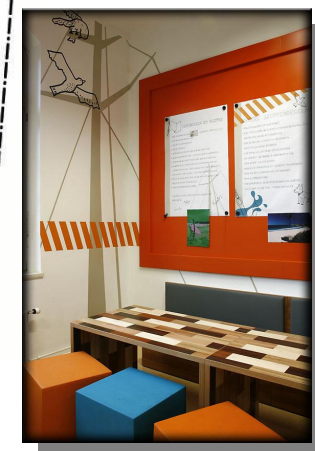
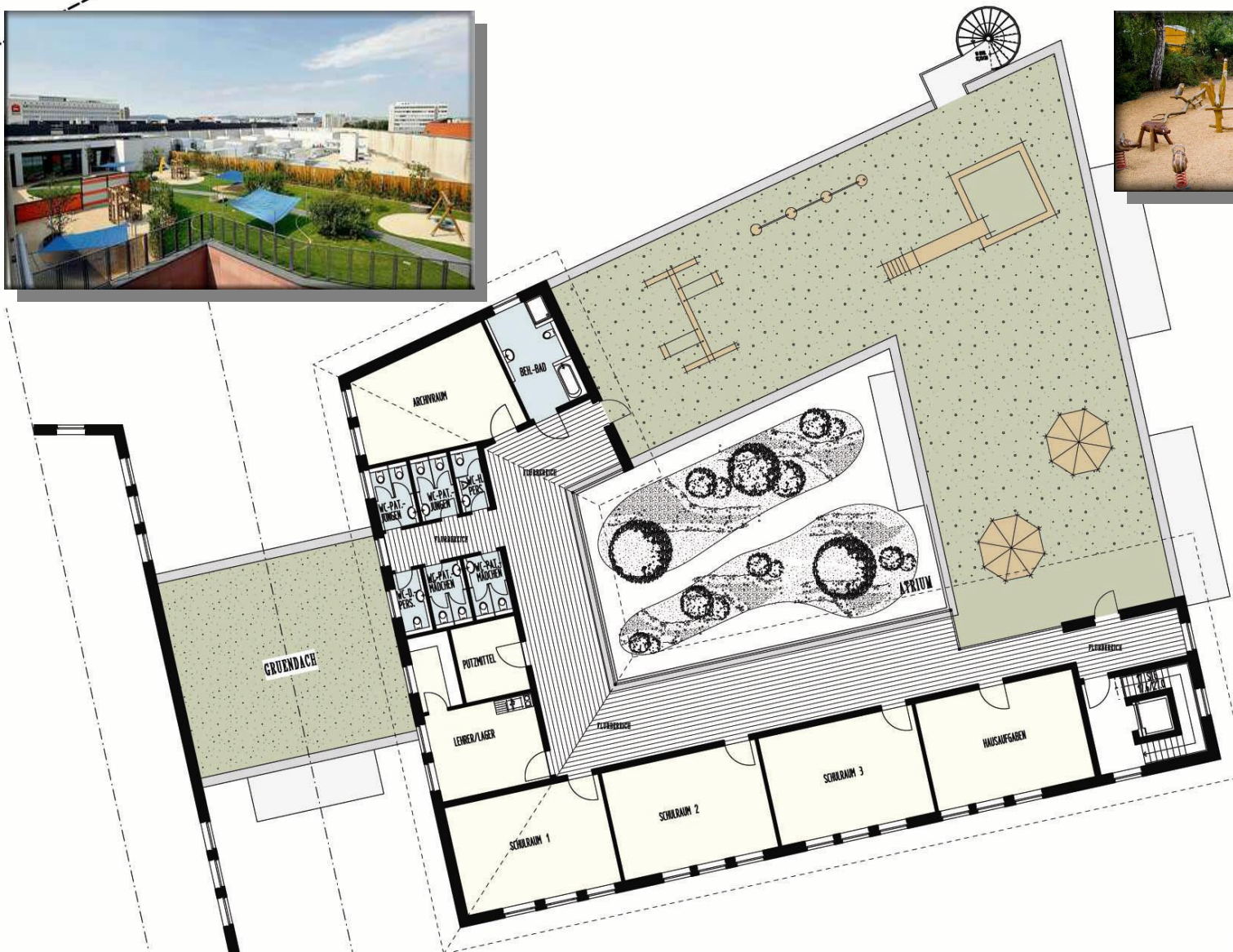


Neubau einer Tagesklinik
für Kinder- und Jugendpsychiatrie und
Psychotherapie mit 12 Plätzen
Buschweg/Am Knick in 22850 Norderstedt

Erdgeschoss



1. Obergeschoss



Süd-Ansicht



Schnitt



Süd-Ansicht

