



NEUBAU NORDERSTEDTER BANK

Ochsenzoller Strasse, Berliner Allee

Auftraggeber



Architekt

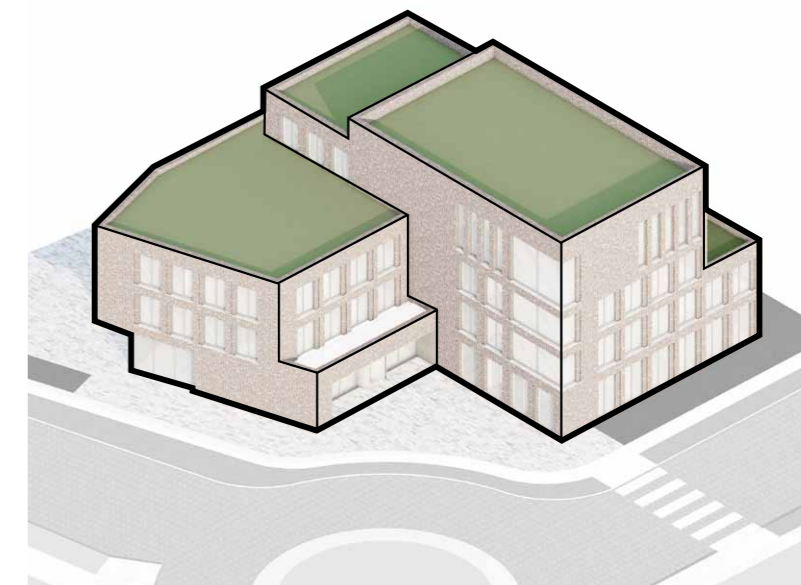
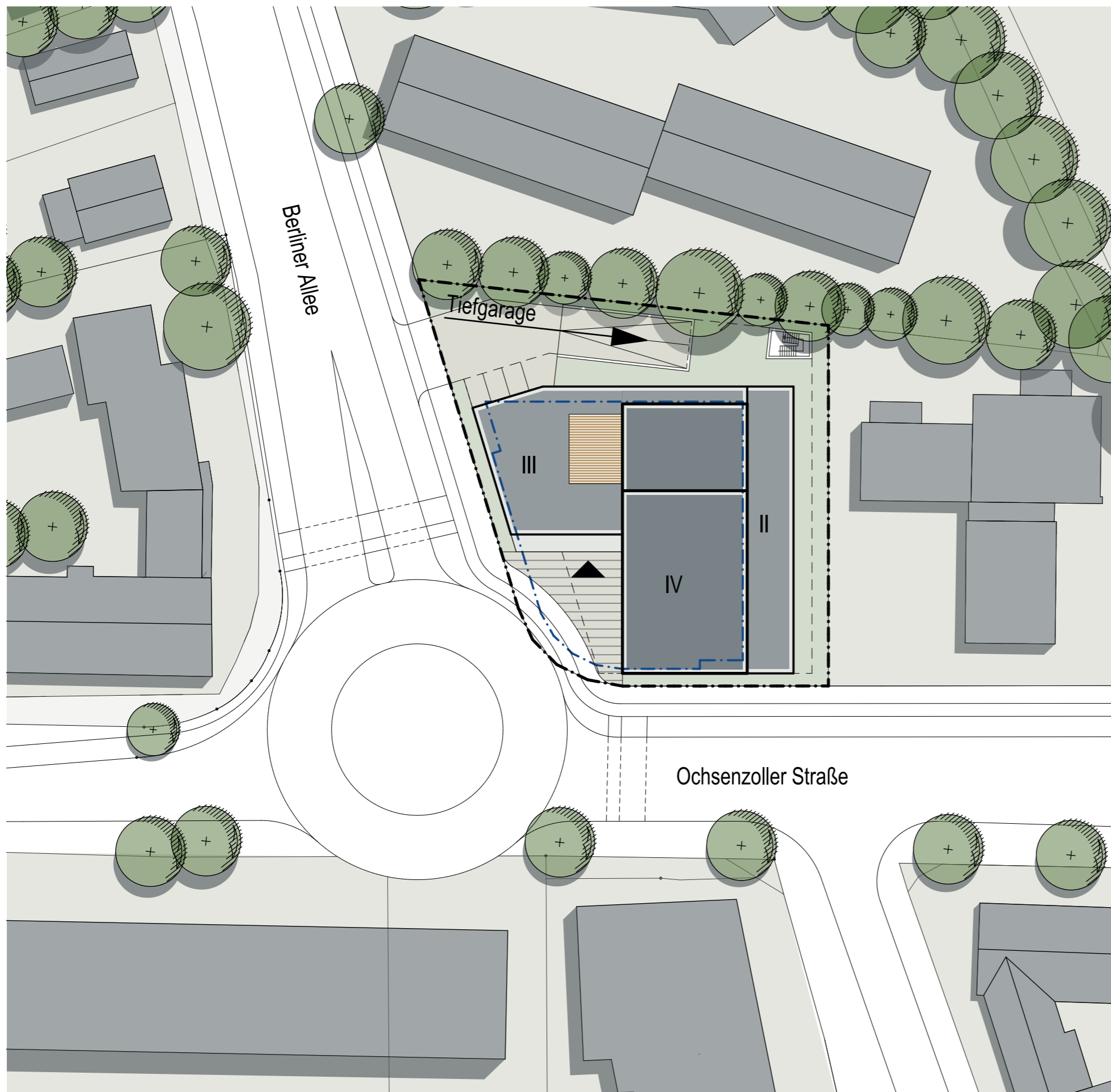
dl architekten + partner,
Eisenbahnstraße 8, 25821 Bredstedt

Stand

08.07.2015







B-PLANDATEN

Grundstücksfläche	1.780 m ²
Baufeldfläche	800 m ²
Überbaute Fläche EG (BGF-a)	900 m ²

-> GRZ 0,5

BGF

Erdgeschoss	900 m ² BGF
1. Obergeschoss	925 m ² BGF
2. Obergeschoss	745 m ² BGF
3. Obergeschoss	457 m ² BGF

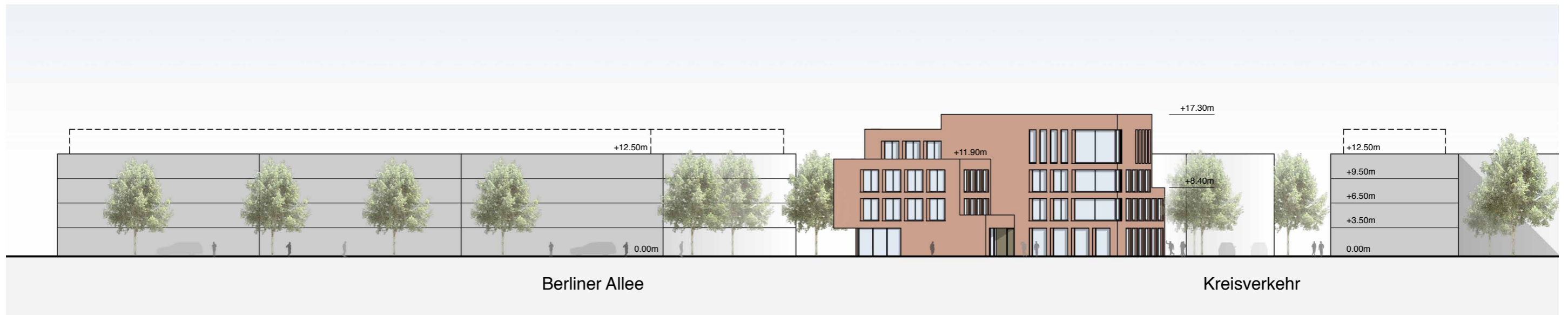
GESAMT 3027 m² BGF

-> GFZ 1,7

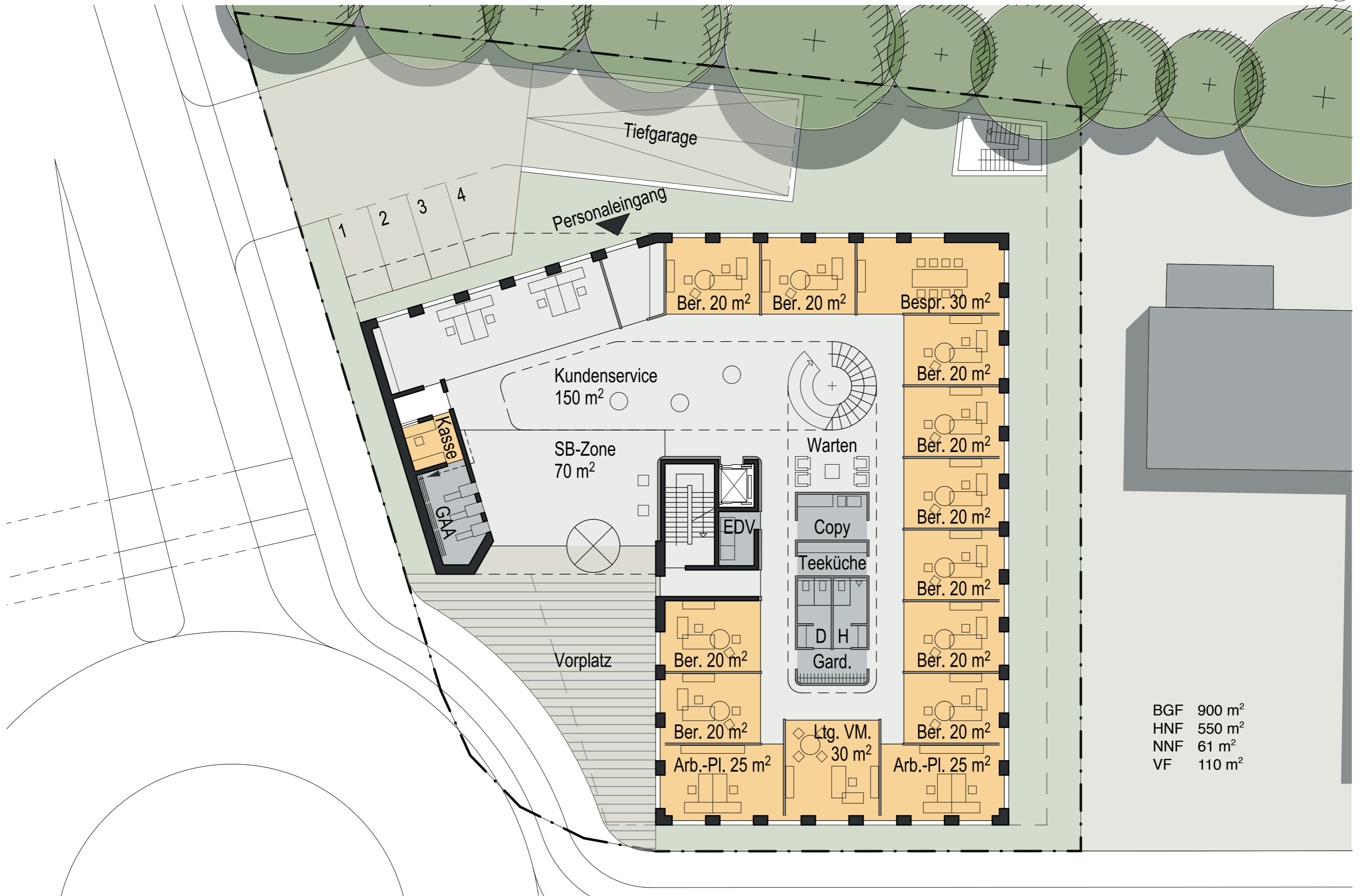
Bruttogeschossfläche TG+UG	1.936 m ² BGF
Hauptnutzfläche (HNF)	1721 m ²
Nebennutzfläche (NNF)	408 m ²
Nebennutzfläche (NNF) (TG)	1.264 m ²
Verkehrsfläche (VF)	784 m ²
Funktionsfläche (FF)	82 m ²



OCHSENZOLLER STRASSE
M 1:500

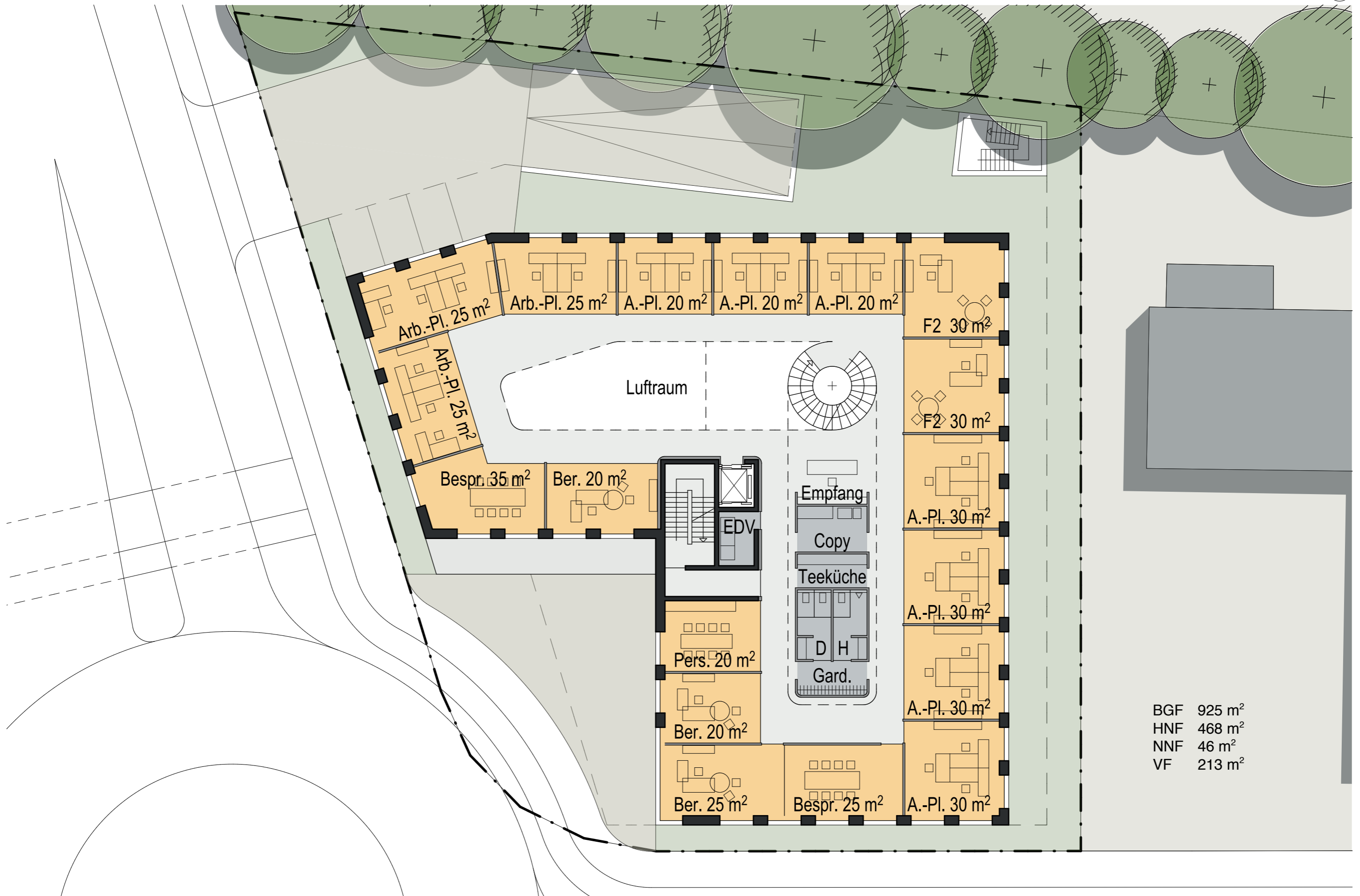


BERLINER ALLEE
M 1:500



BGF	900 m ²
HNF	550 m ²
NNF	61 m ²
VF	110 m ²

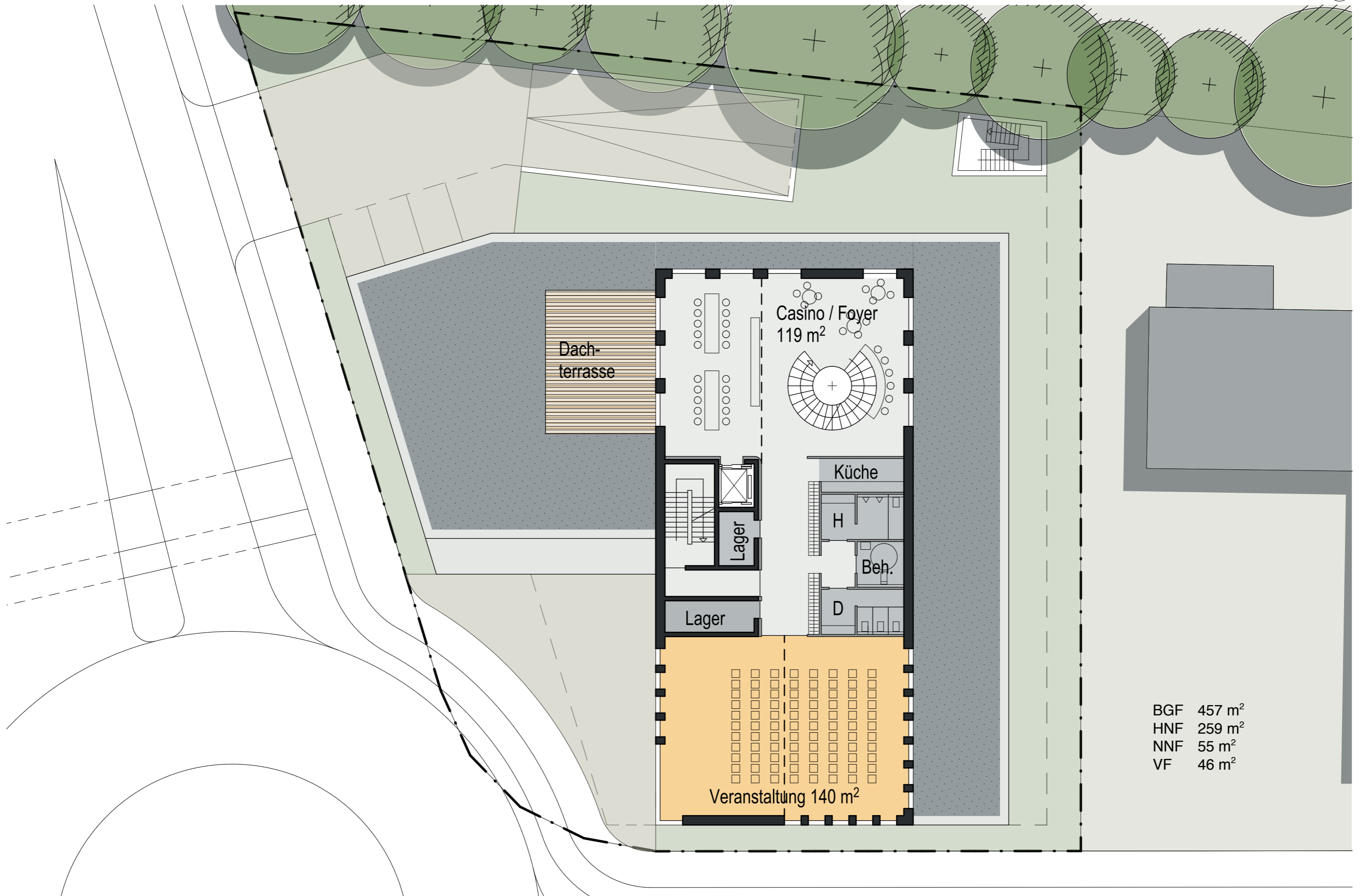




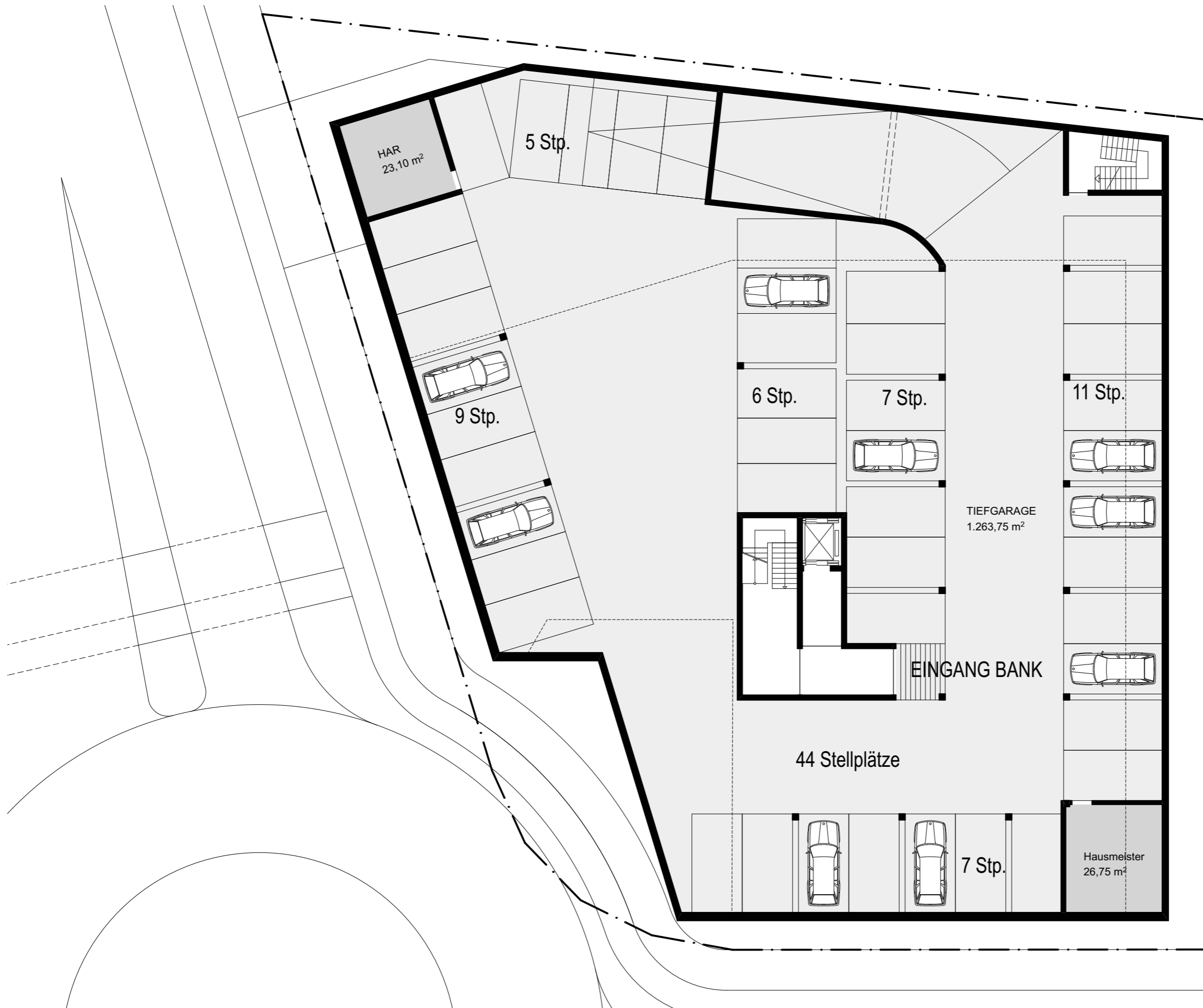
BGF	925 m ²
HNF	468 m ²
NNF	46 m ²
VF	213 m ²



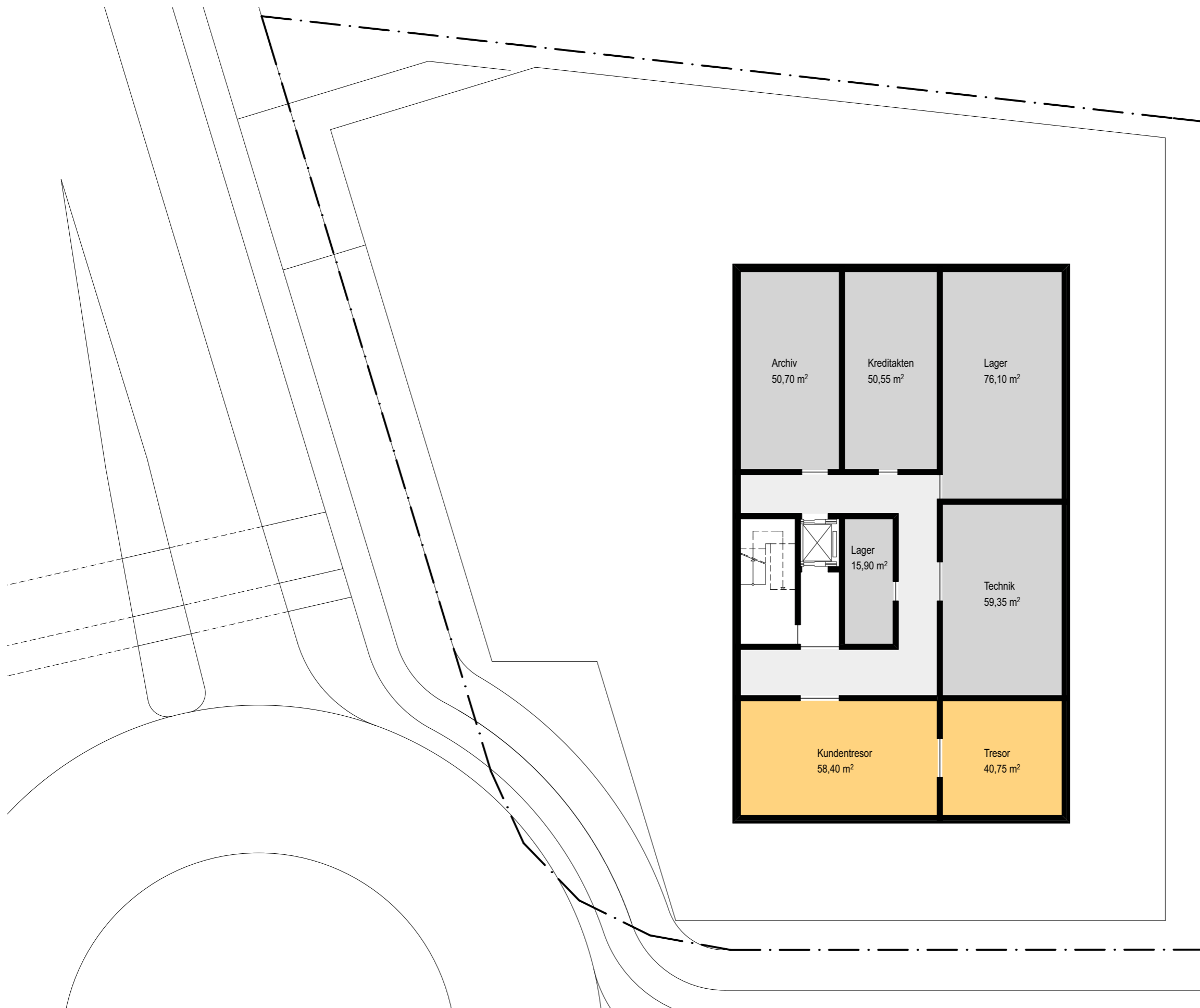
BGF	745 m ²
HNF	345 m ²
NNF	26 m ²
VF	267 m ²



BGF 457 m²
 HNF 259 m²
 NNF 55 m²
 VF 46 m²



BGF	1.451 m ²
NNF	27 m ²
NNF	1.264 m ² (Tiefgarage)
VF	61 m ²
FF	23 m ²

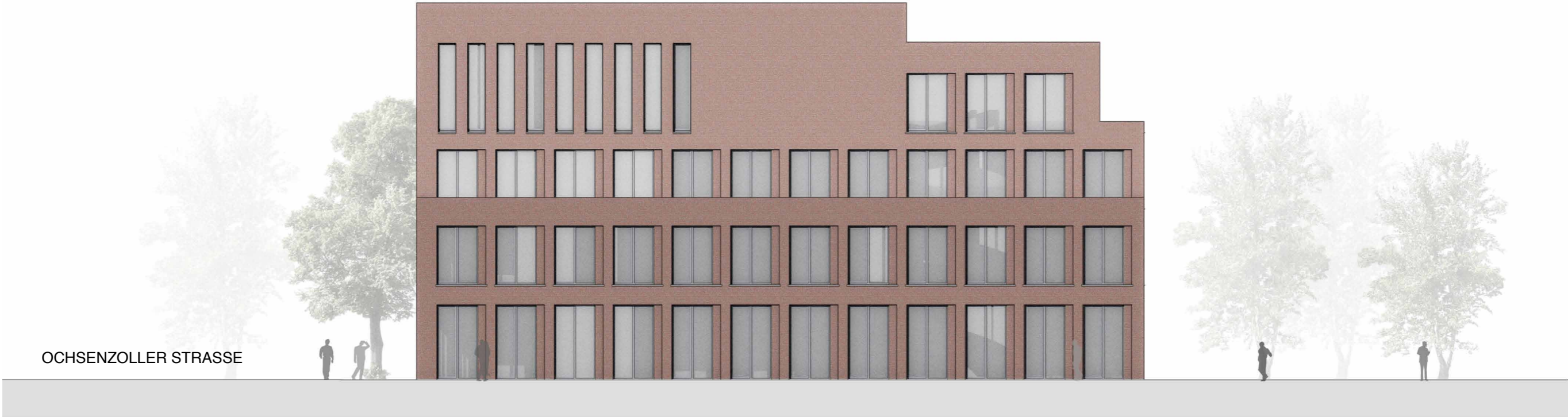


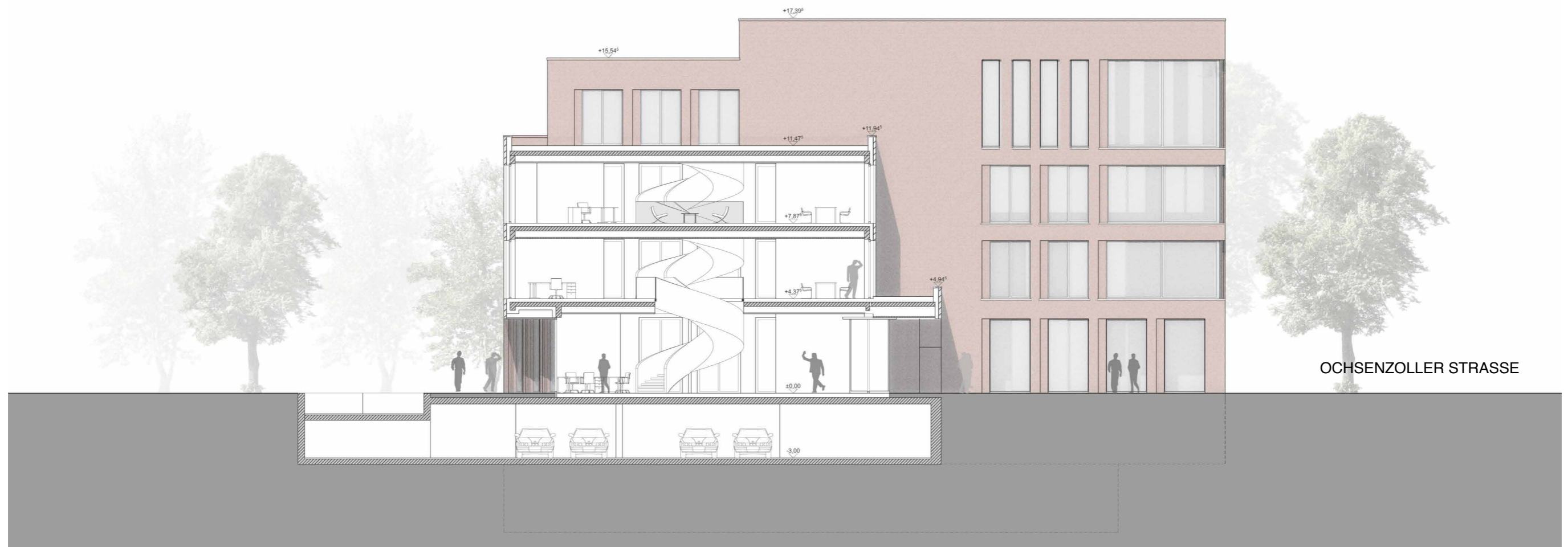
BGF	485 m ²
HNF	99 m ²
NNF	193 m ²
VF	87 m ²
FF	59 m ²





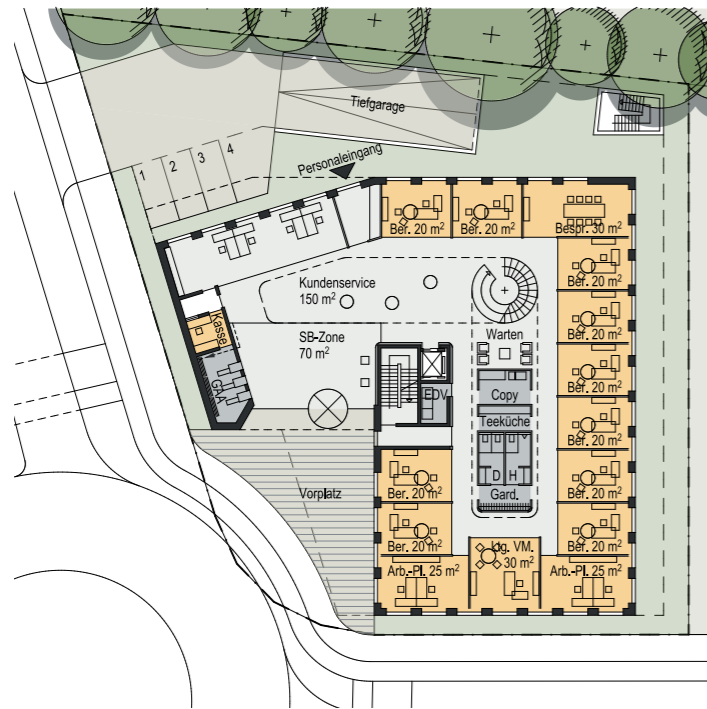








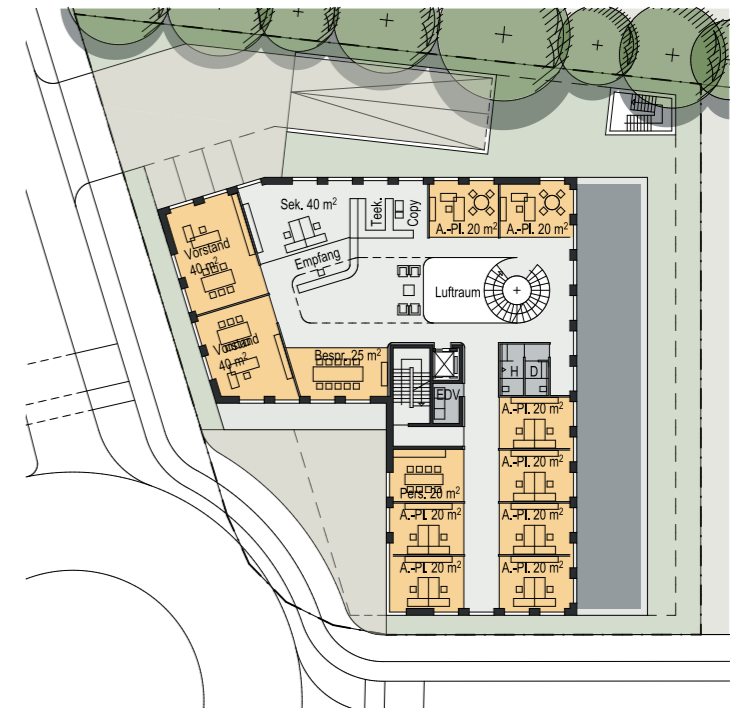
ERDGESCHOSS



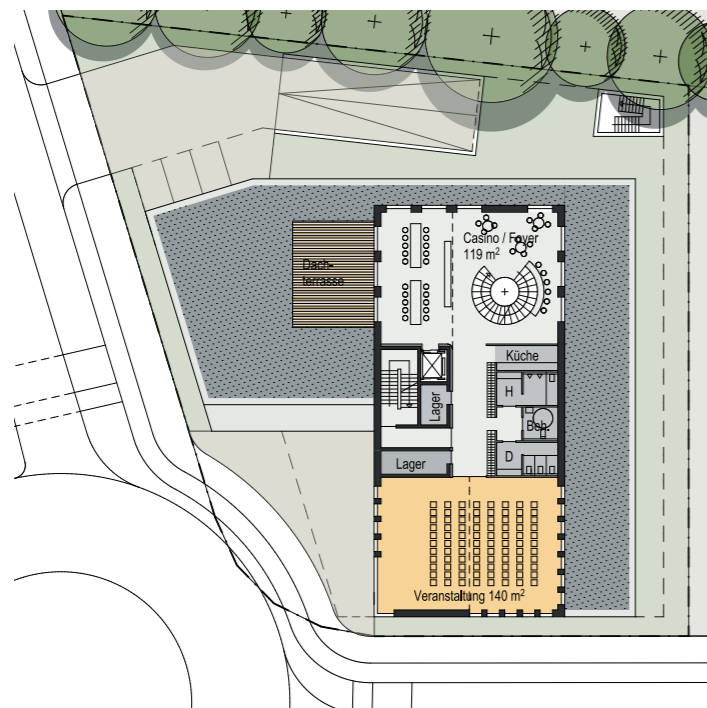
1. OBERGESCHOSS



2. OBERGESCHOSS



3. OBERGESCHOSS



TIEFGARAGE



UNTERGESCHOSS

